

ARTICLE 8. JUVENILE DETENTION FACILITIES

RULE 2. DEFINITIONS

210 IAC 8-2-1 DEFINITIONS

Definitions in this rule apply throughout this article.



8-2-3

Critical incident means any event or situation that seriously disrupts the routine operation of the facility, including the following:

- (1) **An escape.**
- (2) **Serious injury to youth, staff, or visitor.**
- (3) **Death.**
- (4) **Sexual misconduct.**
- (5) **Fire.**
- (6) **Disturbance.**
- (7) **Natural disaster.**
- (8) **Serious criminal act.**



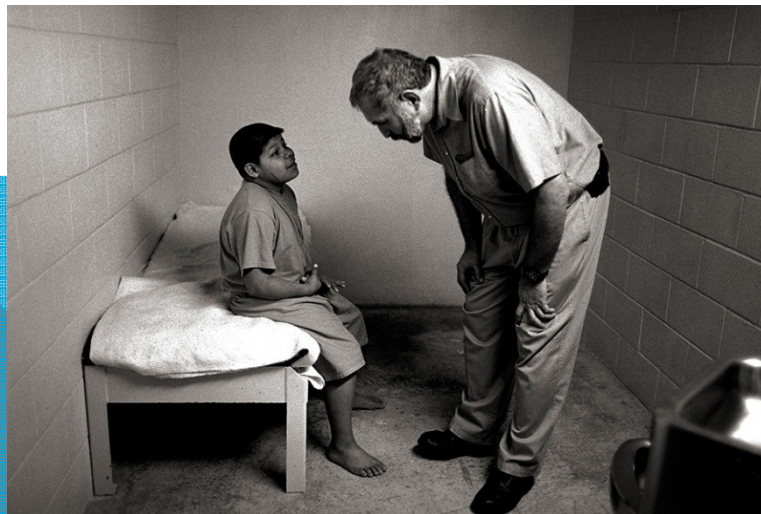
8-2-13 Isolation means the locked placement of a juvenile in a room other than the juvenile's assigned cell or room for a period that exceeds 60 minutes.



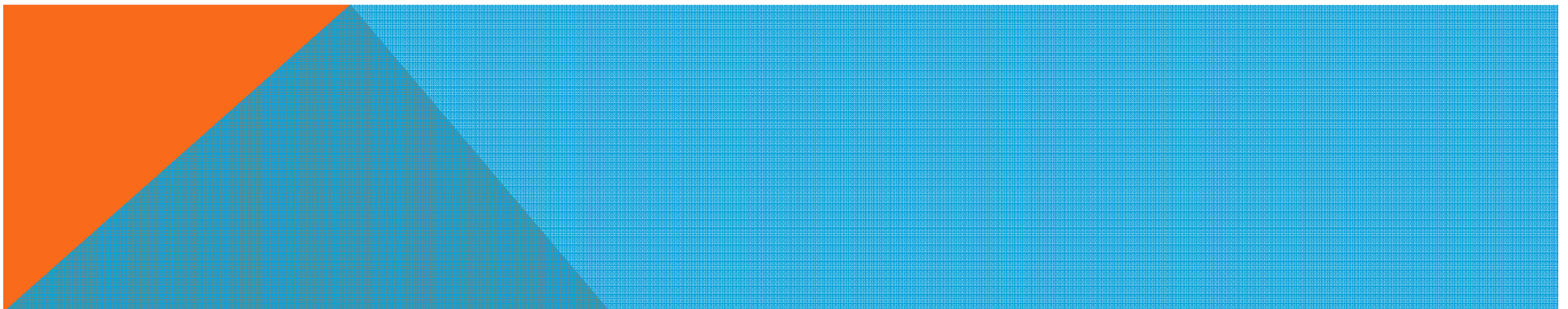
8-2-28 Room confinement means the locked placement of a juvenile in their assigned cell or room for:

**(1) purposes other than sleeping;
and**

**(2) a period of time that exceeds
sixty (60) minutes.**



8-2-5 Dispositional program
means the programming juvenile
detention facilities provide for
juveniles confined for more than
thirty (30) days by dispositional
order of the juvenile court that
complies with IC 31-37-19-21.



8-2-23 PREA refers to the Prison Rape Elimination Act and the National Standards to Prevent, Detect, and Respond to Prison Rape, established in May 2012, by the United States Department of Justice.



8-2-9

(a) **"Health care authority"** means the physician, health care administrator, or health agency that is responsible for the health care delivery system operating within the facility.

(b) When the **health care authority** is an entity other than a physician, final clinical judgment must rest with a single, designated physician who is either a:

(1) **medical doctor; or**

(2) **doctor of osteopathy.**



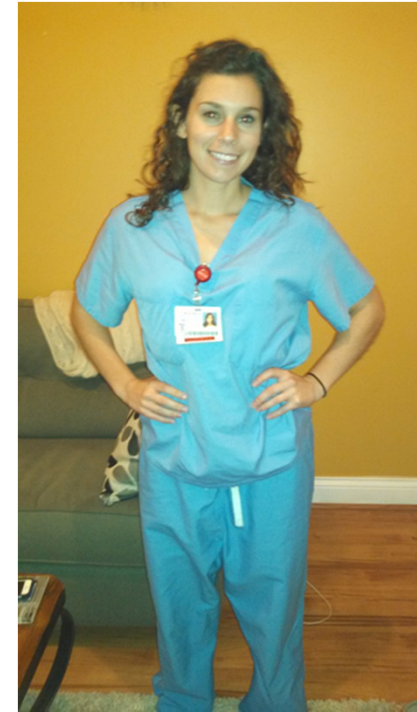
8-2-10 "Health care practitioner" means an individual who:

(1) by virtue of their license is a:

- (A) medical doctor;**
- (B) doctor of osteopathy;**
- (C) doctor of dental surgery;**
- (D) nurse practitioner;**
- (E) physician's assistant; or**
- (F) clinical nursing specialist; and**

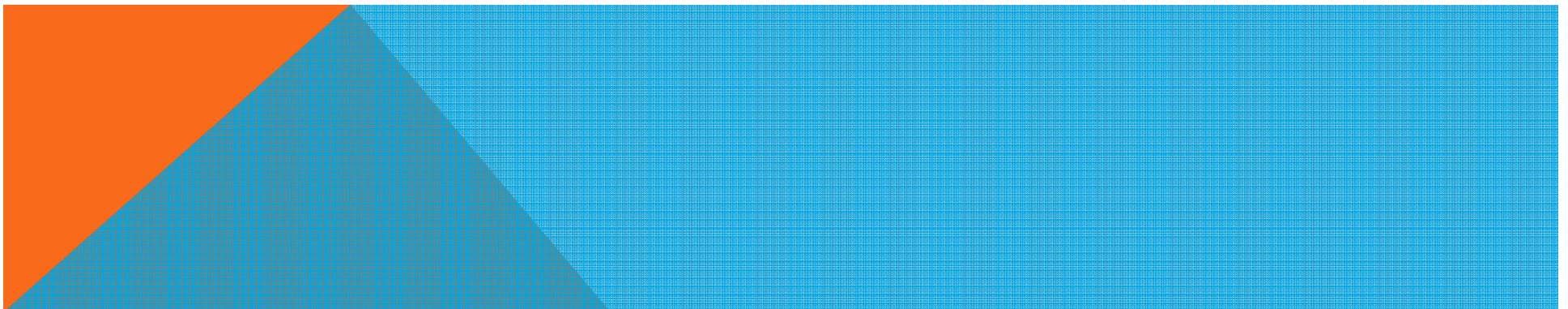
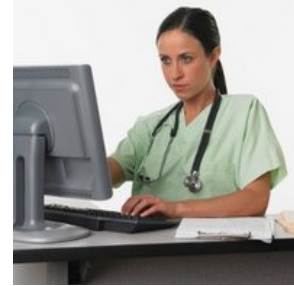
(2) is able to:

- (A) perform physical examinations;**
- (B) perform mental health examinations;**
- (C) evaluate health records;**
- (D) evaluate laboratory results; and**
- (E) prescribe medications.**



8-2-25 Qualified health care professional means a health care professional who performs duties within the scope of their license or certification as a:

- (1) registered nurse;**
- (2) licensed practical nurse; or**
- (2) medical assistant.**



8-2-11 Health trained staff
means a facility staff who has
completed training with a
curriculum approved by the
health care authority in
order to perform select
health care duties.



8-2-17 MAYSI-2 refers to the **Massachusetts Youth Screening Instrument – Version 2 (MAYSI-2)**, a standardized and reliable screening instrument used with youth ages 12 -17, entering the juvenile justice system, to identify potential mental health issues that may need immediate attention.



8-2-18 Mental health authority
means the designated psychiatrist
or psychologist responsible for
the oversight and delivery of
mental health care services
provided at the facility.



8-2-26 Qualified mental health

professional means a clinician who performs mental health services within the scope of being a licensed:

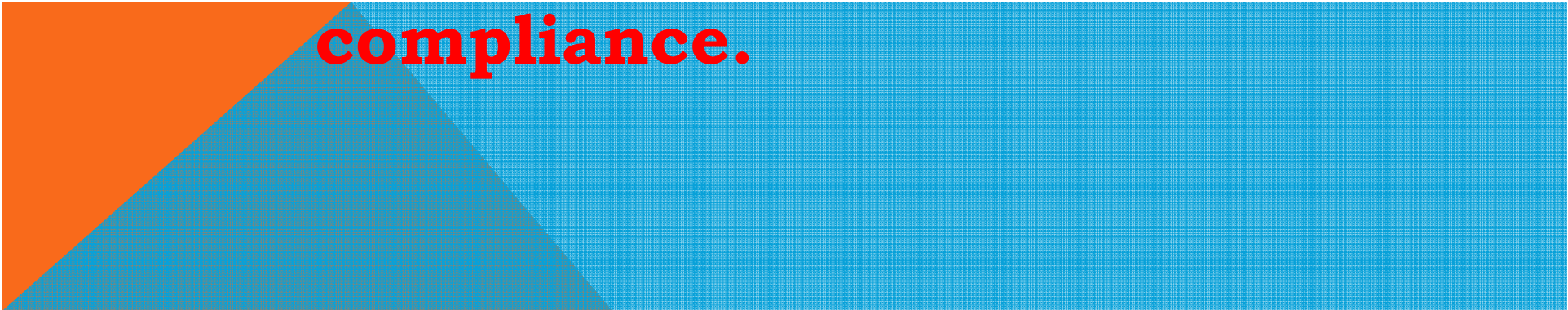
- (1) psychologist;**
- (2) psychiatric nurse;**
- (3) clinical social worker;**
- (4) social worker;**
- (5) mental health counselor;**
- (6) marriage and family therapist; or**
- (7) addiction counselor.**

8-2-19 Mental health care trained staff means a facility staff:

- (1) has completed training with curriculum content approved by the mental health authority; and**
- (2) can recognize both findings on the intake screen and juvenile behavior that requires immediate attention and referral to a qualified mental health professional.**



8-2-16 Mandatory standard means a standard:

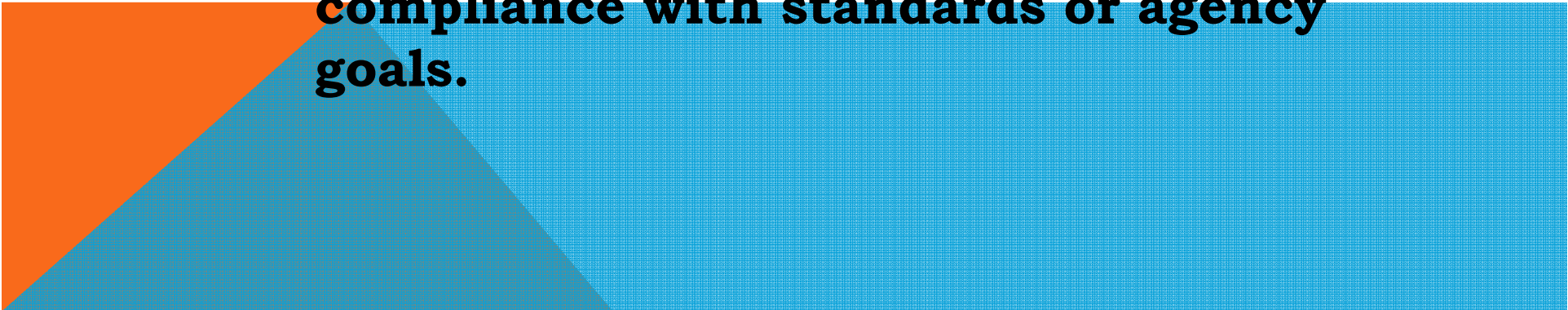
- (1) has been determined to be essential to ensure the life, health, and safety of juveniles and personnel; and**
 - (2) must be conformed with for a juvenile detention facility to achieve compliance.**
- 

8-2-20 Not applicable means a standard does not apply to the juvenile detention facility being audited.



N/A

8-2-21 Policy means the course of action adopted and pursued by an agency that guides and determines present and future decisions and actions.

- ❖ **Policies** indicate the general course or direction of an organization within which the staff must operate.
 - ❖ **Policies** are statements of guiding principles that should be followed in directing activities toward the attainment of objectives, such as compliance with standards or agency goals.
- 

8-2-22 Procedure means the detailed and sequential actions that must be executed to ensure that a policy is fully implemented. It is the method of performing an operation or a manner of proceeding on a course of action.



**8-2-27 Recommended standard
means a standard that:**

**(1) deals with issues not
directly affecting the life,
health, and safety of juveniles
and personnel; and**

**(2) is not a mandatory
standard adopted as part of
this article.**



